



# Creating the New Fayetteville High School

The long-awaited work on phase I of the new Fayetteville High School is set to begin on June 8, the day after classes dismiss for the 2009-2010 school year. The Bates Annex will be demolished, a fence will be raised to separate the existing facility from the construction site, and work will begin to create new academic spaces, the new performing arts center, athletic spaces, and student commons area for a total of 234,360 new square feet.

The work of the architectural team of Hight Jackson/DLR Group/Marlon Blackwell holds true to the concepts that came forward during the community charette process, including a new "front door" facing Martin Luther King Dr., improved performing arts, cafeteria, and athletic spaces, the development of a student commons area, green spaces for outdoor classrooms, and gathering spaces, all centered around instructional spaces.

The phase I work is being financed by the sale of \$45 million in Qualified School Construction Bonds (QSCB). The QSCB program allows a school district to obtain no or low-interest financing. The payments will be made over 16 years using funds realized through budget efficiencies and restructuring existing debt.

The artist renderings below show a

## PHASE I TO BEGIN JUNE 8

pedestrian viewpoint of the new "front door" at the corner of MLK Blvd and Garland Street that is part of the first phase of construction and includes the new passenger drop-off areas in front of the school.

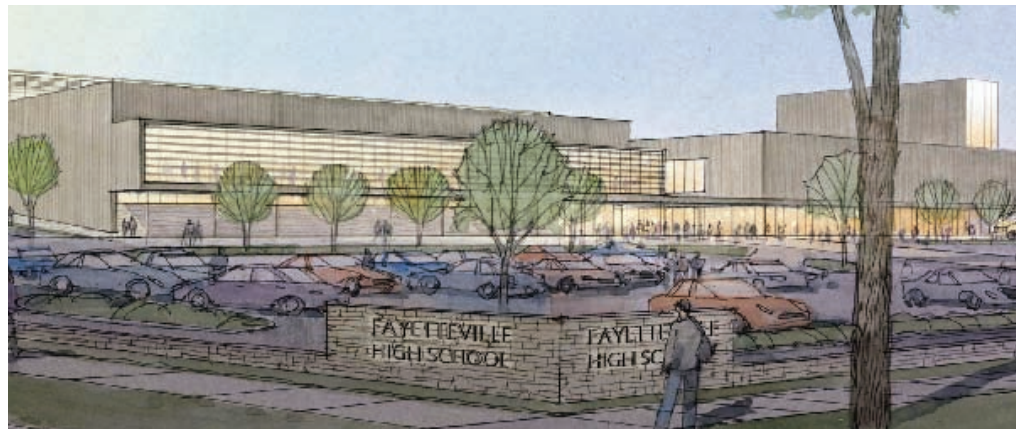
We anticipate phase I to be completed in time for the 2013-14 school year. Students currently occupying the old building will be migrated in groups to the new areas once phase II is designed and approved by the school board.

Parking will be reduced somewhat by the construction process, but once construction is completed there will be enhanced parking space. In the meantime, we are looking at all available options to make sure we have adequate parking for staff and students

during construction.

We understand that on-site construction projects will involve some inconveniences at times, but we have confidence in our architects and Nabholz Construction and their ability to lead us through this process. We look forward to the day when the construction is completed, the new facilities are occupied, and the students and staff of Fayetteville High School finally have a facility that is equal to their talents and performances.

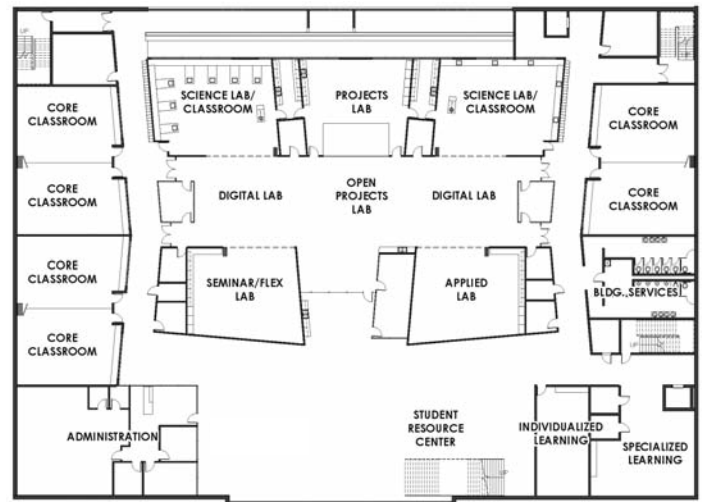
*For more information on the new FHS, go to:  
[www.fayar.net/community/newFHS.html](http://www.fayar.net/community/newFHS.html)*



## Instructional Spaces

At the core of the new Fayetteville High School is the redesign of instructional spaces to better serve the types of learning and instruction taking place at FHS. The floor plan on the right shows the preliminary ideas for these spaces.

Each instructional space is designed for flexibility with core classroom teaching spaces and multiple labs for project-based learning, as well as plenty of room for individualized learning and student-centered resource centers. Phase I will also include new spaces that will expand the Agriculture program and Project Lead the Way, a new pre-engineering program being offered at the jr. high and high schools.



## Primary Features of Phase I:

- ✓ Student commons area/kitchen/servery
- ✓ New instructional spaces
- ✓ Multi-purpose gymnasium
- ✓ Performing arts center and black box theater
- ✓ Improved student drop-off and pick areas
- ✓ Improved rehearsal spaces for band, orchestra and choir
- ✓ Controlled access point to the school
- ✓ Practice areas for wrestling and

cheer/dance

Below is the floor plan for the structures facing Martin Luther King Drive. The new building will house a secure entryway between the athletics on the left, and the performing arts on the right. There will be an auditorium and stage, theater areas, rehearsal areas for band choir, and orchestra, as well as film and TV. The athletic spaces will be large enough to accommodate tournament play. This new area is actually two stories, as it moves up the slope. On the second floor, above

athletics is the new administration wing and above performing arts is the kitchen/servery and new cafeteria/commons area.

The vision for the entire plan includes a pedestrian street that will flow from the east to the west through the center of the campus and will include an outdoor commons area.

To view more information about the high school project, please see the FPS web site at:

<http://www.fayar.net/community/newFHS.html>

